



MC2000 DOT PEEN MARKING

Key Features

- Compact Marking Head
- Mechanical Simplicity
- High Speed Marking
- Operational Reliability
- Low Maintenance
- Deep Impressions

Electric Head

- Data Matrix Code
- Precision Marking

Pneumatic Head

- Deep marking

Model N Bench Unit

Standard bench model systems include a column and cast base with machined T-slot

Model P - Portable Marking Units

Portable units are used when parts are too large to be marked on a benchtop



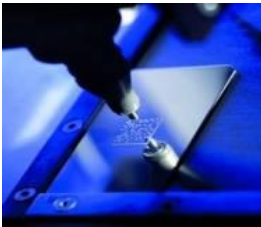
AVAILABLE MARKING WINDOWS

X Dimension	Y Dimension
90mm	60mm
17mm	50mm
17mm	100mm
17mm	160mm
150mm	100mm
170mm	170mm
250mm	125mm



2D DATA MATRIX TRACEABILITY

- Proven direct part marking tools include **Laser** (YAG, CO2, & fiber) & **MC2000 MARKER**
- Auto, aerospace, and military compliant direct part marking traceability, data capture & mark verification
- Mecco is a Certified Vision Integrator of **Cognex** products
- **MarkIT Software** for effective data management and system control



UID MARKING

- MECCO UID traceability solutions meet all DOD requirements allowing for greatly facilitated item tracking and asset management.
- Our turnkey systems consist of marking and automatic identification technologies that capture the data and software for proper data management



MECCO MARKING & TRACEABILITY

290 Executive Drive • Suite 200 • Cranberry Township, PA 16066
Phone 724-779-9555 • Fax 724-779-9556

www.mecco.com

FIBER LASERS

The fiber series is designed for marking part numbers, 2D Data Matrix, logos and graphics

It is perfect for marking on:

- Anodized & painted aluminum
- Steel
- Stainless Steel & Titanium
- Plastics
- Labels

FEATURES:

- 10W and 20W models
- Compact design for minimal footprint
- Air-cooled design
- 100,000 + hours of laser lifetime
- Zero maintenance with no consumables
- Low cost of ownership
- Two year system warranty
- Windows based software interface

LASER MARKING

Looking to mark UID, serial #'s, logos...? MECCO laser marking systems provide complete marking and traceability solutions.



MECCO offers a full laser marking product line featuring:

- Fiber Lasers
- CO2 Lasers
- Diode Pumped & Flash Lamp Lasers
- Mecco also offers customized turnkey & integrated systems

CO₂ LASERS

For product identification and traceability, the CO₂ laser series offers the most cost effective solution in laser technology. These compact, air-cooled units commonly replace other marking technologies, such as ink jet and labeling, due to its ability to achieve high speed marking while maintaining mark quality.

FEATURES:

- 10W, 30W, 60W & 100W models
- Air-cooled design
- 45,000 hours + of laser lifetime
- Zero maintenance & consumables
- Lowest cost of ownership
- Windows based software interface
- Ideal for marking on plastics, wood, glass, rubber & product packaging
- Two year system warranty

DIODE PUMPED & FLASH LAMP LASERS

If your application requires high peak energy, high reliability and flexible operations, MECCO's diode pumped and flash lamp lasers can provide the solution for you. Whether you are surface etching 2D data matrix and serial numbers, or deep engraving text and logos, these lasers can do the job. Our diode pumped lasers with diode resonators are highly efficient, provide longer laser lifetime and have zero consumables. Our flash lamp lasers can work in all kinds of environments and applications and is the most versatile and flexible laser on the market.

FEATURES:

- 20W, 50W, and 100W models for diode pumped
- 10,000 hours of lifetime per diode pack
- 50W, 85W, 100 and 150W models for flash lamp
- Q-switched operation for highest peak energy
- 2x-8x variable beam expansion for versatility
- 5 standard lens sizes for field sizes 2" to 12" square
- Modular design
- Internal cooling unit for diode pump laser
- Flash lamp laser has water-cooled design
- Windows based software interface

INTEGRATED LASER TURNKEY SOLUTIONS

- Class One enclosures in a range of standard sizes as well as custom designs including our patent pending Safety Seal
- Manual, semi-automated, and automated part handling
- Bench top and stand alone marking stations
- X,Y, and Z axis motion both manual & automated
- Part rotation options
- Multi-position dial indexers
- Conveyor integration
- Pick-n-Place robot integration
- Vision systems for traceability and inspection
- Customized interfaces for ease of implementation and operation



MECCO MARKING & TRACEABILITY

290 Executive Drive • Suite 200 • Cranberry Township, PA 16066

Phone 724-779-9555 • Fax 724-779-9556

www.mecco.com