

INTER-LAKES BASES PRODUCTS



Inter-Lakes Bases, Inc.

"THE BASE PEOPLE"

MODEL B-75 MACHINE BASE



B-75 Model with panels and doors

MODEL B-75 MACHINE BASE

- Machine bases are welded and painted machine grey enamel.
- Standard models with welded top plate or bolted top plate.
- Sheet metal wall construction in 1/8" and 3/16".
- Standard sizes are 18" x 18" thru 48" x 60" in 6" increments.
- When a base only is selected, the mounting rails are provided and grinding is an option.
- Standard top plate thicknesses are 5/8", 3/4", 1".
- Welded and ground top plates are welded to the base then Blanchard ground on the top surface to .002" per ft. flatness.
- Bolted top plates are Blanchard ground top & bottom to .002" per ft. flatness

MODEL B-150 MACHINE BASE



Standard B-150 Model



B-150 Model with panels

MODEL B-150 MACHINE BASE

- The base mounting rails are ground on the top side to .001" per foot flatness cumulative.
- Machine bases are welded, shot blasted, and painted machine tool grey enamel.
- Panels and doors available in steel, aluminum and carbon fiber.
- Standard sizes are 24" x 24" thru 60" x 96" in 6" and 12" increments.
- Standard top plates finishing thickness of 3/4", 1", 1-1/4" and base heights of 24", 30", 36".
- Blanchard ground top plates .001" per foot flatness cumulative, thickness +1/16" / - 1/32" microfinish 64, closer tolerances and Mattison grinding also available.

MODEL B-250 MACHINE BASE

B-250 Frame



Custom B-250 Frame

MODEL B-250 MACHINE BASE

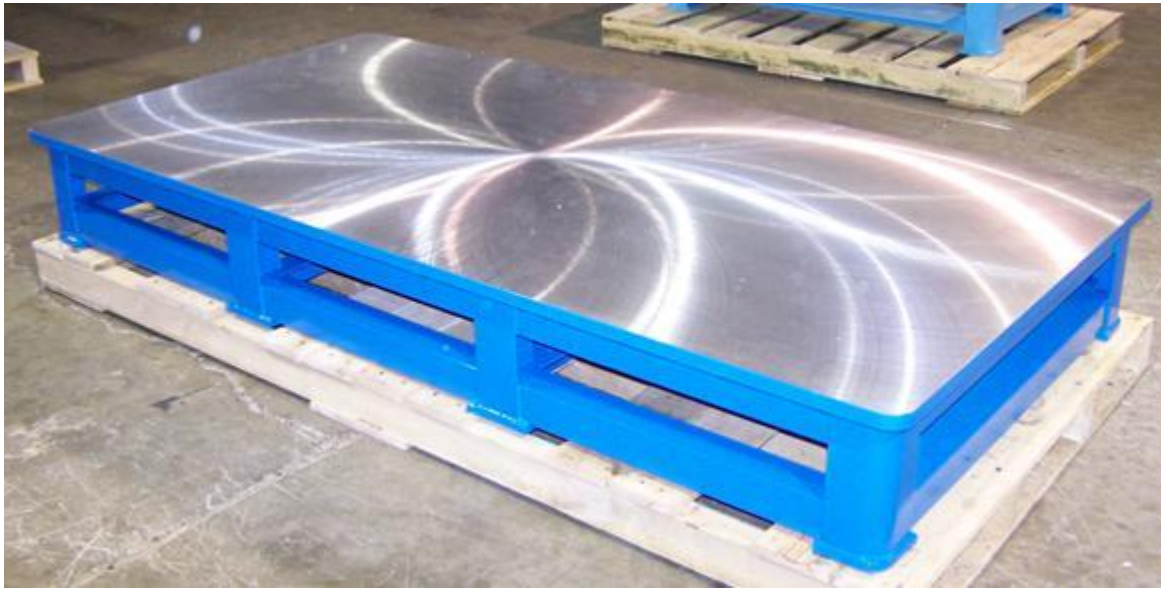
- Welded steel, stainless or aluminum construction.
- 3 " x 3 " x ¼ " tubular frame.
- 4" x 4" x ¼" tubing available as option.
- Center legs and cross braces on bases 72" and larger.
- Standard sizes are 24" x 24" thru 24" x 48" in 6" increments, 24" x 48" thru 72 x 96 in 12" increments.
- Top plate welded on.
- Thermal stress relieved and shot blasted.
- Blanchard ground flat .001" per ft. flatness cumulative.
- Painted machine tool grey.

MODEL B-300 MACHINE BASE



Standard B-300 model

MODEL B-300 MACHINE BASE

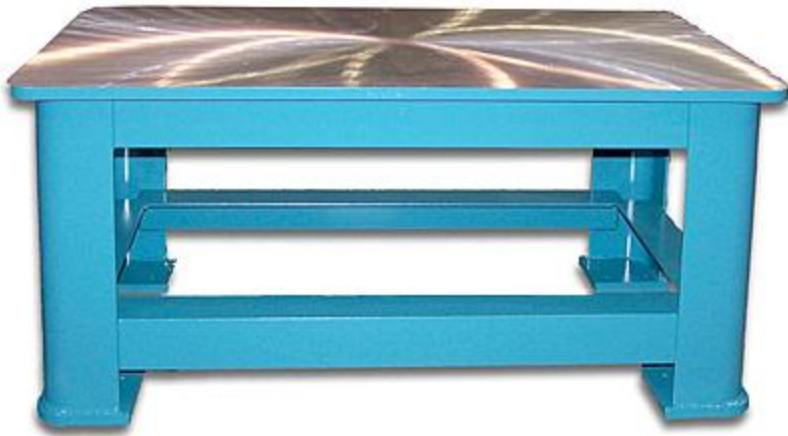


B-300-T model with webbing

MODEL B-300 MACHINE BASE

- Standard models B-300 with legs or B-300-T without legs.
- Standard sizes are 24" x 24" thru 72" x 96" in 6" and 12" increments.
- Welded steel construction.
- Legs and braces welded and ground flush.
- Tubing construction is 3" x 3" x 1/4" up to 20 sq ft, any base over 20 sq. ft. would have 4" x 4" x 3/8" tubing.
- Webbing under top plate, with dimensions of 6" x 12" reinforcement sections.
- Thermal stress relieved and shot blasted.
- Standard top plate thickness of 1", 1-1/2", and 2".
- Top plate welded on and Blanchard ground to +/- .00 " flatness cumulative.
- Painted machine tool grey.

UTILITY BASE 101



Standard Utility Base



Custom Utility Base with accessories

UTILITY BASE 101

- The Model 101 is a multi-purpose, utilitarian base for supporting general types of machinery such as metalworking.
- A rugged moderate cost solution for many applications.
- Sturdy, all steel, unitized construction.
- 1/4" wall frame.
- Welded TOP PLATE; stress relieved, shot blast, ground to .002" per foot cumulative, flatness and primed.
- Center legs and cross braces are standard for 72" and larger bases.
- Standard sizes are 24" x 24" thru 48" x 48" in 6" increments, 48" x 48" thru 72" x 96" in 12" increments.
- Standard top plates starting thickness of 3/4", 1", 1-1/4" and base heights of 24", 30", 36".
- Many standard sizes available to ship in 2 to 3 days

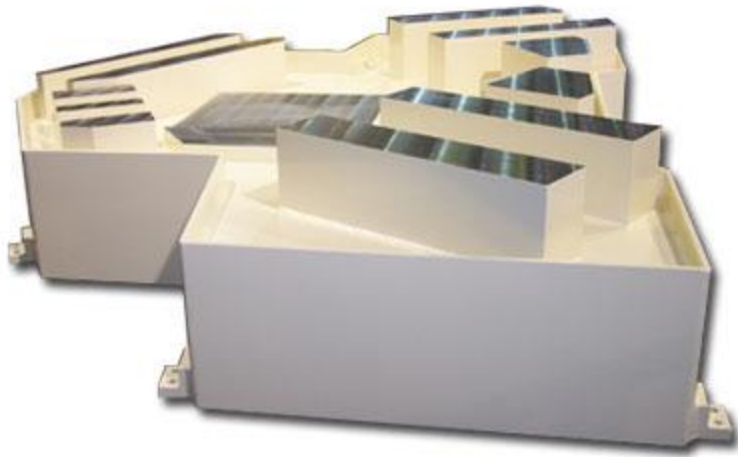
WORK CELL BASE



WORK CELL BASE

- The work cell base comes in three standard sizes: WC-36, WC-48 and WC-60.
- These 36", 48" and 60" square work cell units have a 36" high steel base to which is mounted a 40" high modular steel enclosure.
- Heavy-duty construction utilizing a 3" x 3" tubular framework that can easily provide wiring confinement.
- Removable access doors.
- One shelf with power cord access holes.
- Standard top plate thickness 3/4" and ground flat within .001" per foot, cumulative.
- Painted two-tone beige polyurethane finish.

CUSTOM BASES & WORK CELLS



CUSTOM BASES & WORK CELLS

- Inter-Lakes for many years have been building customer specified bases, frames, risers, columns and other related elements and details when our standard units were not adaptable.
- Through continuously advancing innovation and new technological concepts, we offer to assist your engineers with construction ideas and review your designs for cost effectiveness.
- In house CNC machining capabilities.
- Laser profiling, plasma cutting, black oxidizing, anodizing, hard coating, electroless nickel, chroming and other state of the art metal removal, cutting and finishing services available.
- When required, CMM (Coordinate Measuring Machine) certification can be provided.

DIAL PLATES



DIAL PLATES

- Dial plate materials are steel, stainless steel, aluminum and carbon fiber.
- Steel dial plates include being thermally stress relieved at 1100 degrees for a minimum of one hour per inch of thickness and is cooled in accordance with ASTM standards.

DIAL PLATES

STEEL:

- Thickness +/- .005 "
- Flatness .001" per foot, cumulative
- Parallelism +/- .001" T.I.R.
- Micro-Inch finish 63
- Center Bore +.001" / -.000"
- Outer Diameter +/- .060"

DIAL PLATES

CAST ALUMINUM:

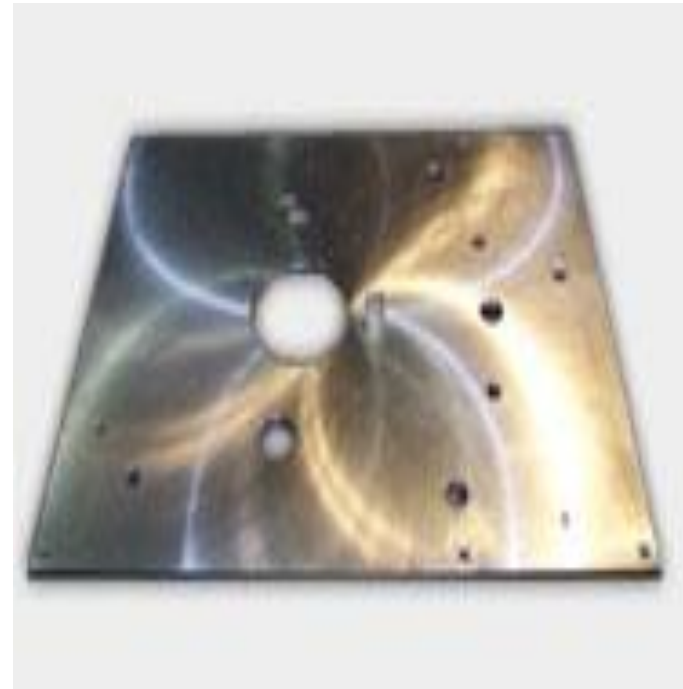
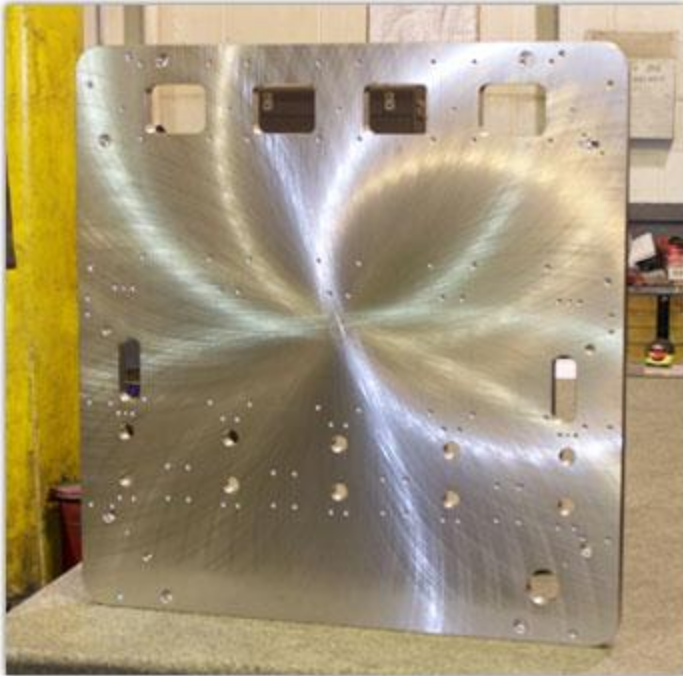
- Machined both sides
- Thickness +/- .005
- Flatness .003 per foot, cumulative
- Parallelism +/- .005 maximum
- Micro-Inch Finish 25
- Center Bore +.001 -.000
- Outer Diameter +/- .060

DIAL PLATES

ROLLED ALUMINUM:

- Blanchard ground both sides
- Thickness $+.000-.120''$ maximum
- Flatness $.001$ per foot, cumulative
- Parallelism $\pm .002$ T.I.R.
- Micro-Inch Finish 63
- Center Bore $+.001 -.000$
- Outer Diameter $\pm .060$

PLATES



PLATES

- We can provide steel, aluminum, or stainless to your dimensions, finished to your specific thickness and machined to your own prints.
- Complete 1 source responsibility, start to finish.
- Turn key plates ready for your unique applications.

PLATES

PLATE OPTIONS:

- Machining to your print
- Special tolerances and Mattison grind
- Anodizing
- Electroless nickel plating
- Black oxide plating
- Teflon coating

RISERS, ANGLE PLATES & PEDESTALS



RISERS, ANGLE PLATES & PEDESTALS

- For many years, Inter-Lakes Bases has been building customer specified bases, frames, risers, columns and other related weldments.
- Customer service is part of Inter-Lakes Bases' every day business.
- They can modify any standard base to meet their customer's specific needs.

MACHINING, GRINDING, BURNING SERVICES

MACHINING:

- 5 & 4 Axis CNC Boring Mills with 10 ft. x 40 ft. envelope.
- Inter-Lakes Bases has the ability and the capacity to handle your largest applications.
- They can machine drilled and tapped holes, bore holes, dowel holes, keyways, slots and any number of other modifications to your machine base, plate or dial plate, all to your specifications.

ACCESSORIES & OPTIONS

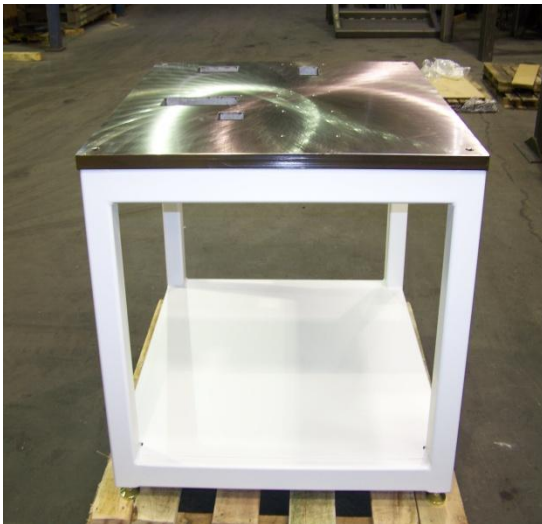
Inter-Lakes Bases offers a complete line of accessories for their products including:

- Doors, panels, shelves and drawers
- Coolant troughs, wings and fork lift ports
- Casters, levelers and vibration dampening pads
- Safety enclosures, electrical enclosures and electrical panels
- Adjustable top plates and worker protection panels
- Special paint, coatings and plating

ACCESSORIES & OPTIONS



- B150 base with coolant trough, side panels with machining and a louvered front door.
- Top plate shows large, machined hole

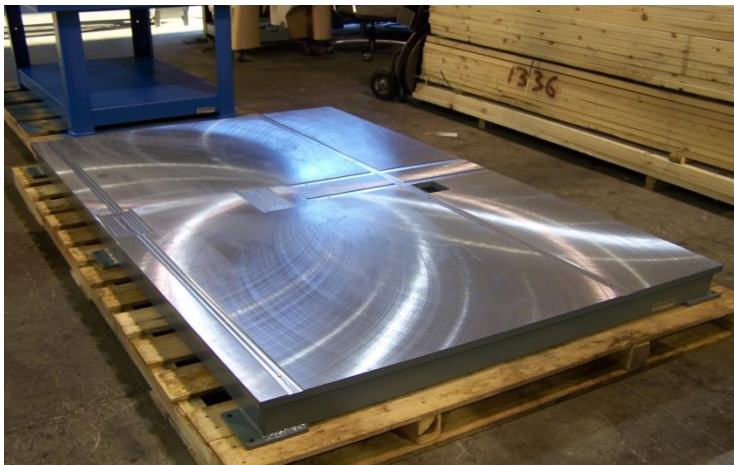


- B150 base with powder coating and levelers

ACCESSORIES & OPTIONS



- B150 base with double doors and side panels
- Top plate shows machined holes and keyways



- B300-T base with slots , keyways and holes

ACCESSORIES & OPTIONS

BASE OPTIONS:

- Foot Pads: 4P, 4PS, 6P, 6PS, 8P, 8PS
- Wall thickness 1/4", 3/8", 1/2"
- Casters
- Levelers
- Special paint and powder coating
- Panels & formed flush doors
- Locking door latches
- Fork lift tubes
- Coolant trough

ACCESSORIES & OPTIONS

TOP PLATE OPTIONS:

- Steel
- Aluminum
- Stainless Steel
- Anodizing
- Nickel Plating
- Black Oxide
- Flash Chrome
- Mattison Grind
- Machining to Print

INTER-LAKES BASES PRODUCTS

*Our attention to detail
makes the Difference.*

Inter-lakes Bases has reached new Higher Standards In Quality



All Inter-Lakes Fabricators/Welders are now AWS/AISC Certified